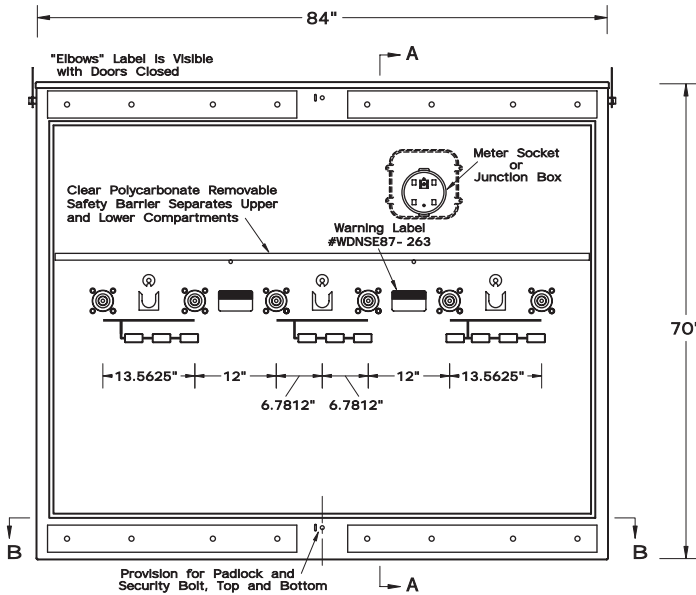
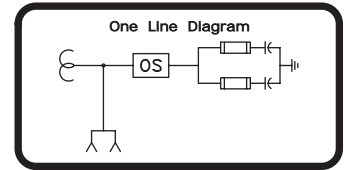
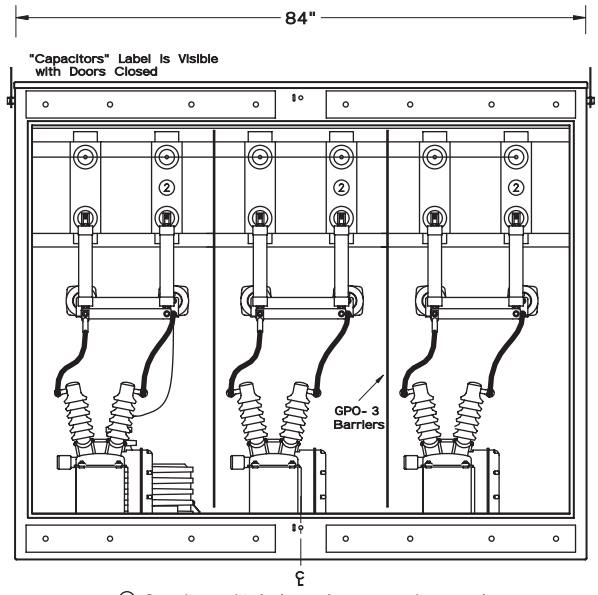


# EPM-PCS-25-320P-E2-I15-2S-CCD

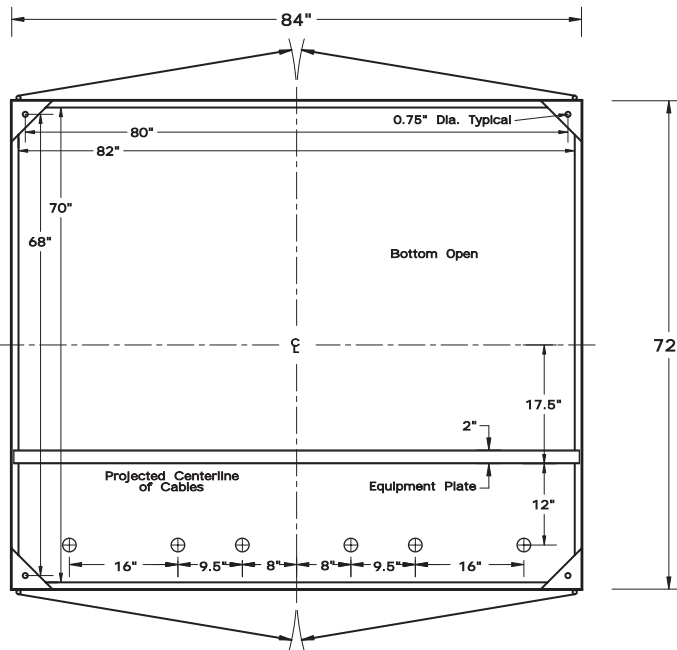
Three Phase - Two Ways per Phase  
 1800 KVAR Max Design  
 200-Amp Elliott Air-Insulated Bushing Wells  
 100-Amp (Max) 15.5 kV Bolted Tag Fuse Provisions  
 14.4/24.9 kV Grounded Wye Nominal  
 15.2/26.3 kV Grounded Wye Max Design  
 125 kV BIL



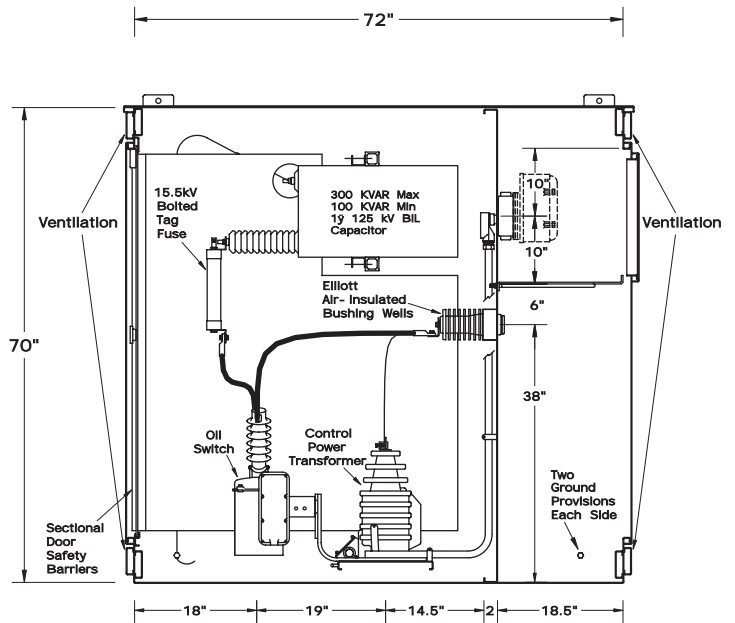
**Front View**  
Doors Removed



**Rear View**  
Doors & Door Safety Barriers Removed



**Section BB**



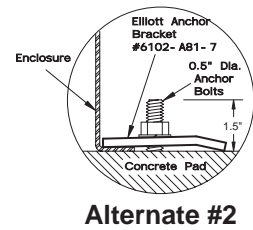
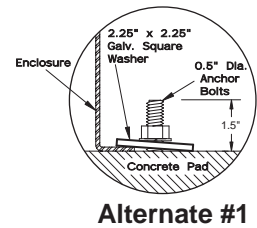
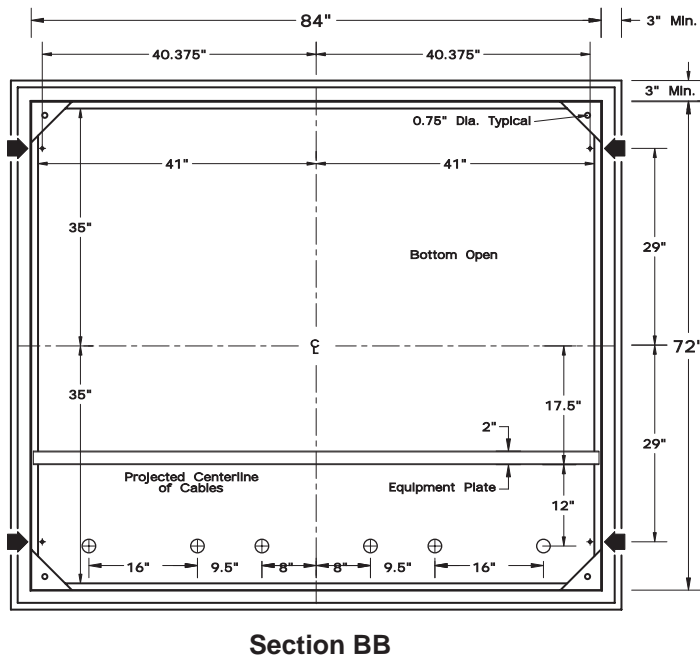
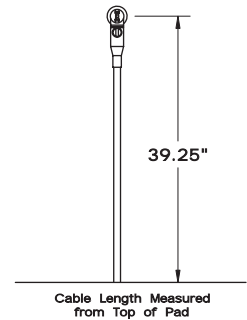
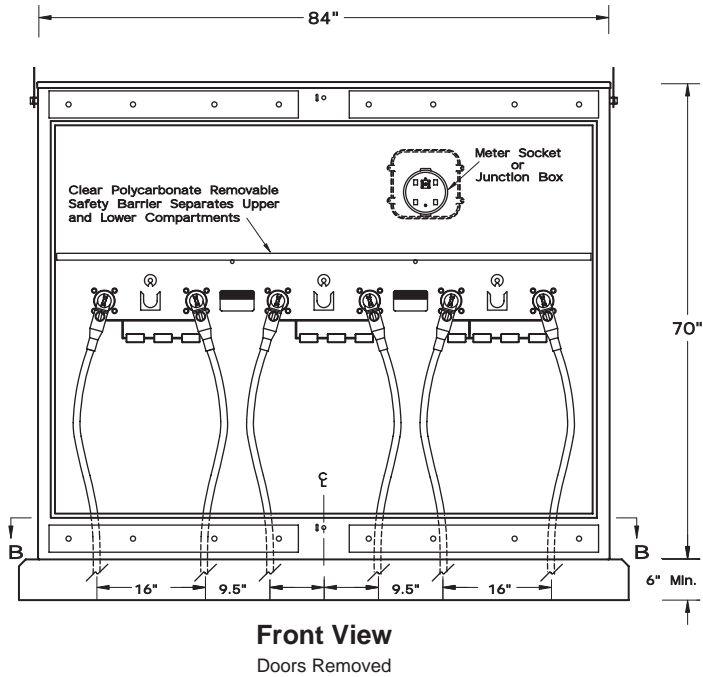
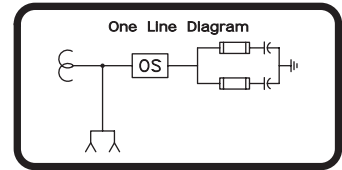
**Section AA**

11-Gauge Steel Enclosure  
 Cross-Kinked Top  
 Stainless Steel Hinges  
 Stainless Steel Parking Stands  
 Recessed Stainless Steel Penta-Head Security Bolts  
 Clear Polycarbonate Sectional Door Safety Barriers  
 Ventilation (Baffled Inside and Outside) to meet ANSI C57.12.28  
 Transformer Mounting Plates Punched for all NEMA Standard CTs and VTs  
 120 Volt Control Power Transformer  
 Paint "Pad-Mount Green" Munsell #7GY 3.29/1.5  
 8" Min Strike Distance to Ground  
 10" Min Strike Distance Phase-to-Phase

EPM-PCS-25-320P-E2-I15-2S-CCD		
Layout		
Date: 03/08/93	File: D93100RO	Drawing No.:
By: lvy	Version: 0.0	93-100-1
<b>ELLIOTT INDUSTRIES, INC.</b>		
Bossier City, Louisiana 71171-6388 U.S.A.		

# EPM-PCS-25-320P-E2-I15-2S-CCD

Proposed Cable Training and  
Typical Pad Requirements



+ ◀ Anchor Bolt Locations

EPM-PCS-25-320P-E2-I15-2S-CCD			
Proposed Cable Training & Pad Requirements			
Date:	03/08/93	File:	D93100R0
By:	lvy	Version:	0.0
		Drawing No.:	93-100-2
<b>ELLIOTT INDUSTRIES, INC.</b>			
Bossier City, Louisiana 71171-6388 U.S.A.			