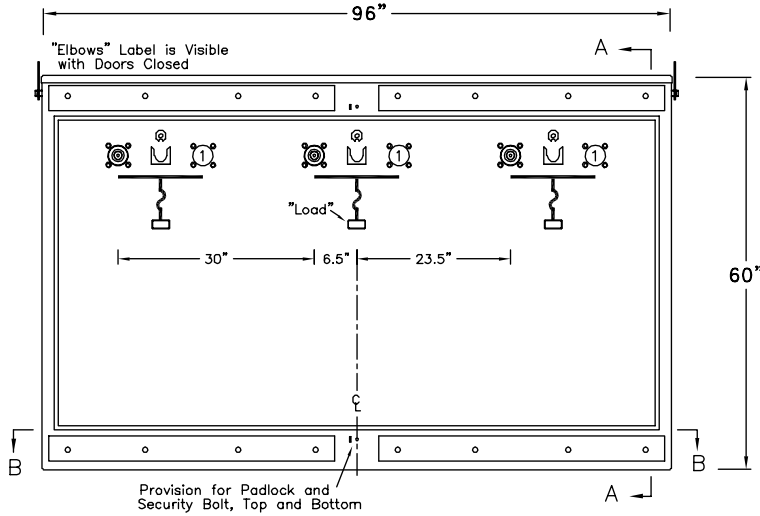
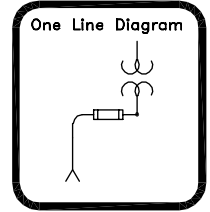


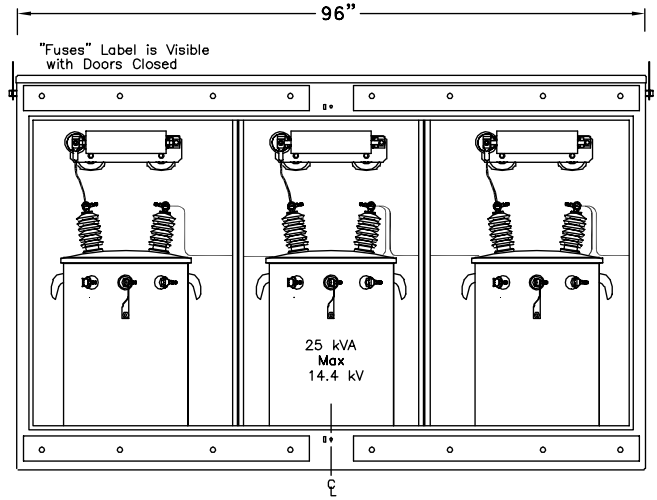
# EPM-PTS-25-311P-E2-CM6-25KVA

Three-Phase - Two Ways per Phase  
 200 Amp Elliott Air Insulated Bushing Wells  
 125 Amp (Max) 15.5 kV Clip Mounted CL Fuse Provisions  
 15.2/26.3 kV Grd. Wye Max Design  
 60 Hertz, 125 kV BIL

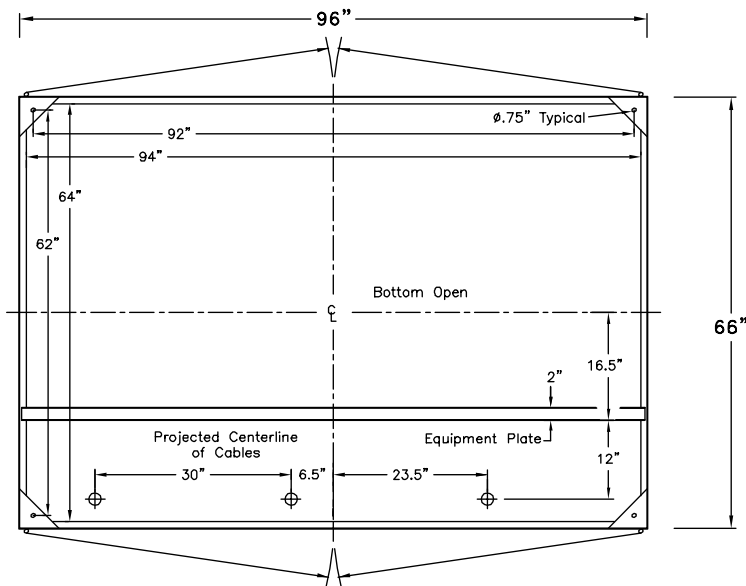


**Front View**  
Doors Removed

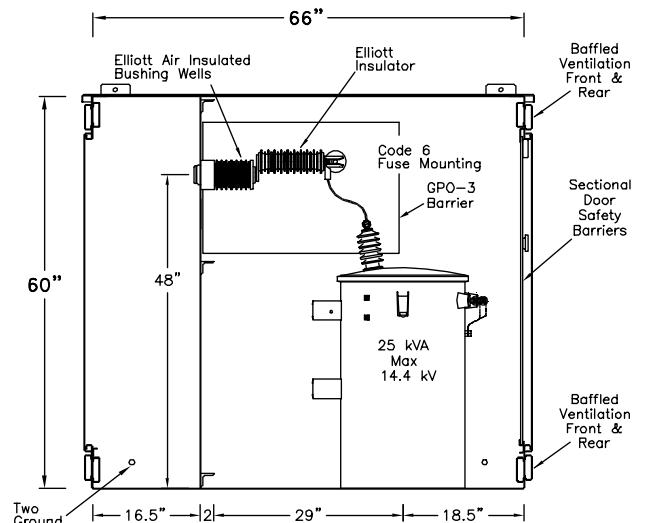
① Bushing Wells may be added if circuit requirements change.



**Rear View**  
Doors & Door Safety Barriers Removed



**Section BB**



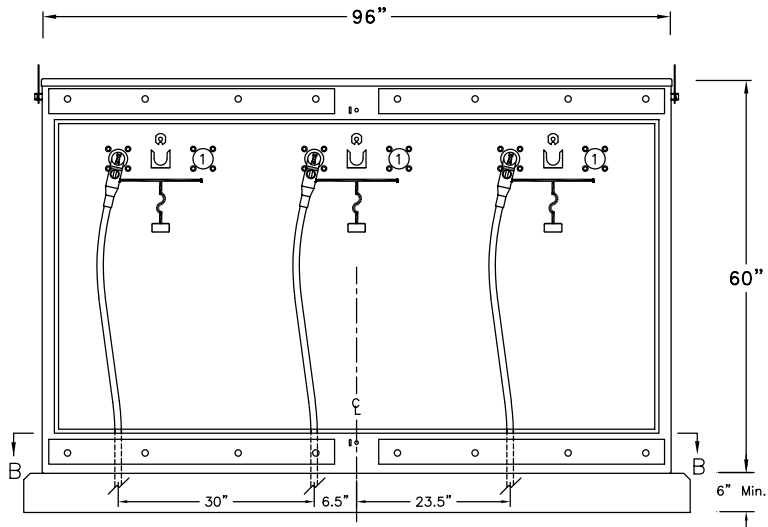
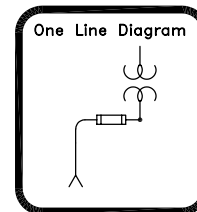
**Section AA**

11 Gauge Steel Enclosure  
 Removable Cross Kinked Top  
 Stainless Steel Hinges  
 Stainless Steel Parking Stands  
 Recessed Stainless Steel Penta Head Security Bolts  
 Clear Polycarbonate Sectional Door Safety Barriers  
 8" Min Strike Distance to Ground  
 10" Min Strike Distance Phase to Phase  
 Paint "Pad-Mount Green" Munsell #7GY 3.29/1.5

<b>EPM-PTS-25-311P-E2-CM6-25KVA Layout</b>		
Date: 09-10-99	File: D99349R0	Drawing No.:
By: ACM	Approved by: JES	99-349-1
<b>Elliott Industries, Inc.</b> Bossier City, Louisiana 71171-6388 U.S.A.		

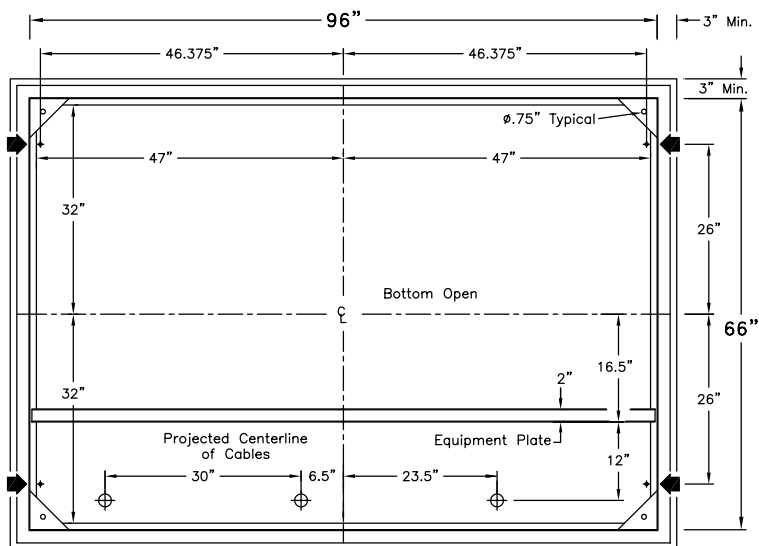
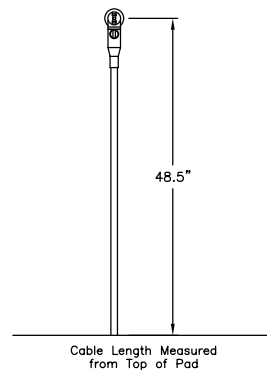
# EPM-PTS-25-311P-E2-CM6-25KVA

Proposed Cable Training and Typical Pad Requirements



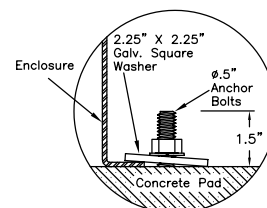
Front View  
Doors Removed

① Bushing Wells may be added if circuit requirements change.

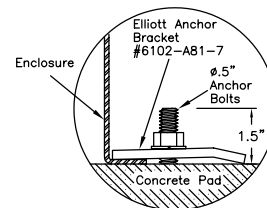


Section BB

+ Anchor Bolt Locations



Alternate #1

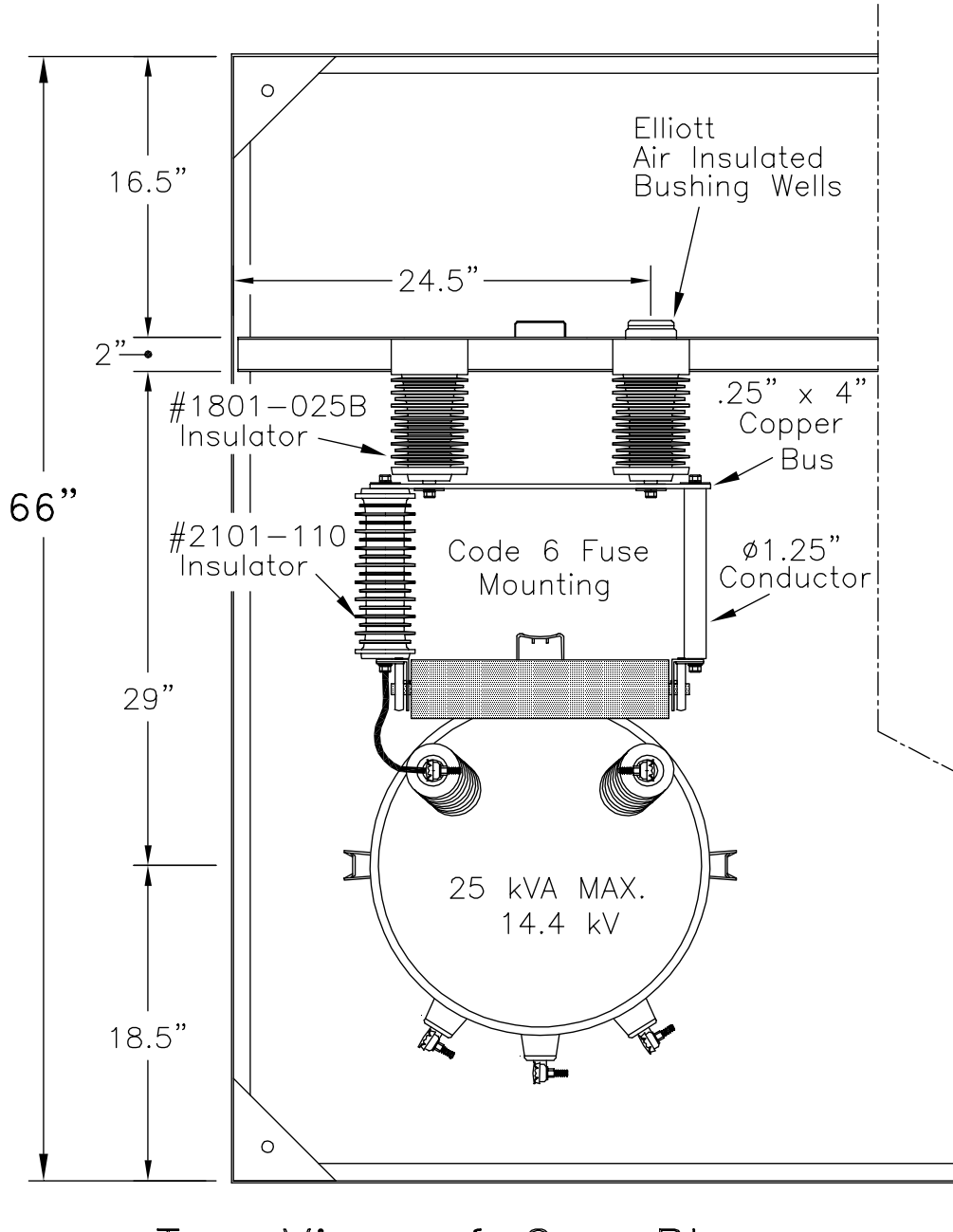
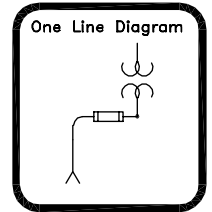


Alternate #2

EPM-PTS-25-311P-E2-CM6-25KVA		
Proposed Cable Training & Pad Requirements		
Date: 09-10-99	File: D99349R0	Drawing No.:
By: ACM	Approved by: JES	99-349-2
Elliott Industries, Inc. Bossier City, Louisiana 71171-6388 U.S.A.		

# EPM-PTS-25-311P-E2-CM6-25KVA

Three-Phase - Two Ways per Phase  
 200 Amp Elliott Air Insulated Bushing Wells  
 125 Amp (Max) 15.5 kV Clip Mounted CL Fuse Provisions  
 15.2/26.3 kV Grd. Wye Max Design  
 60 Hertz, 125 kV BIL



Top View of One Phase

EPM-PTS-25-311P-E2-CM6-25KVA		
Top View of One Phase		
Date: 09-10-99	File: D99349R0	Drawing No.:
By: ACM	Approved by: JES	99-349-3
Elliott Industries, Inc.		
Bossier City, Louisiana 71171-6388 U.S.A.		